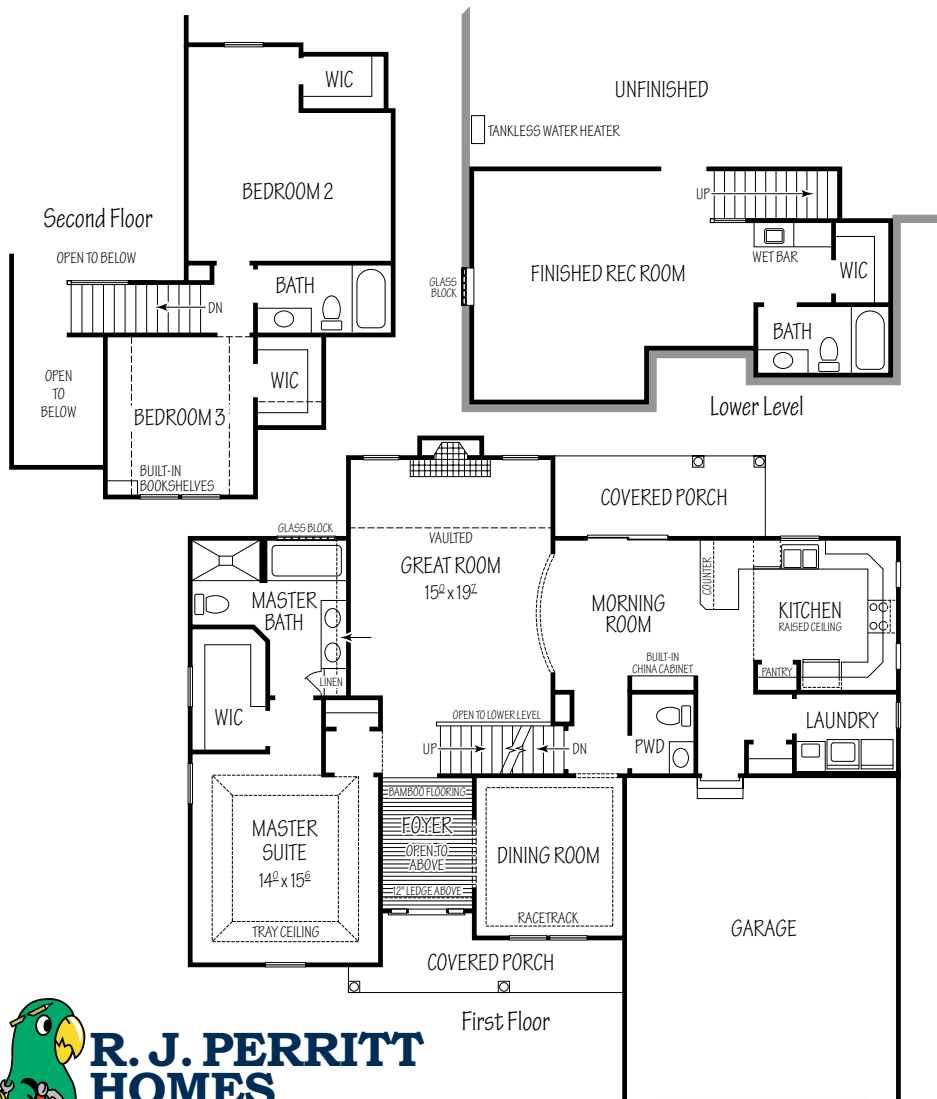


# The Woodcliffe

420 Kestrel Way  
1,971 Sq. Ft. + 485 Sq. Ft. Lower Level



## Kitchen

- Built in stainless appliances
- Trayed Ceiling
- Maple panel cabinets with crown
- Upgraded undermount sink & faucet
- Tile backsplashes with glass accents
- Large peninsula with lunchcounter
- Custom built memo wall

## Master Suite

- Trayed ceiling with crown
- Large walk-in closet

## Master Bath

- 2 separate undermount sinks
- Tile backsplashes
- 5' Shower
- Soaking tub
- Glass block window

## Great Room

- 13' vaulted ceiling
- Fireplace with custom surround
- Paddle fan

## Half Bath

- Upgrade sink
- Tile backsplashes

## Foyer

- 11' Ceilings
- Bamboo flooring
- Deco wall art
- Decorator ledge

## Laundry

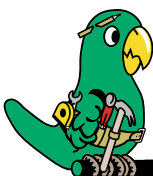
- Sink base with drop in sink

## Exterior

- Stone front
- Covered porches
- Cul-de-sac lot

## Interior

- Wood window sills
- Professionally decorated
- Green building practices
- Race track ceiling
- SmartStand corn carpet
- 24' deep garage
- Bedroom #3 built-in bookshelves
- Finished Lower Level
- Built-in China cabinets



**R. J. PERRITT  
HOMES**  
The Green Builder

Homes To Fit Your Lifestyle

[www.rjperritthomes.com](http://www.rjperritthomes.com)

Call Bob The Builder 440-897-5872