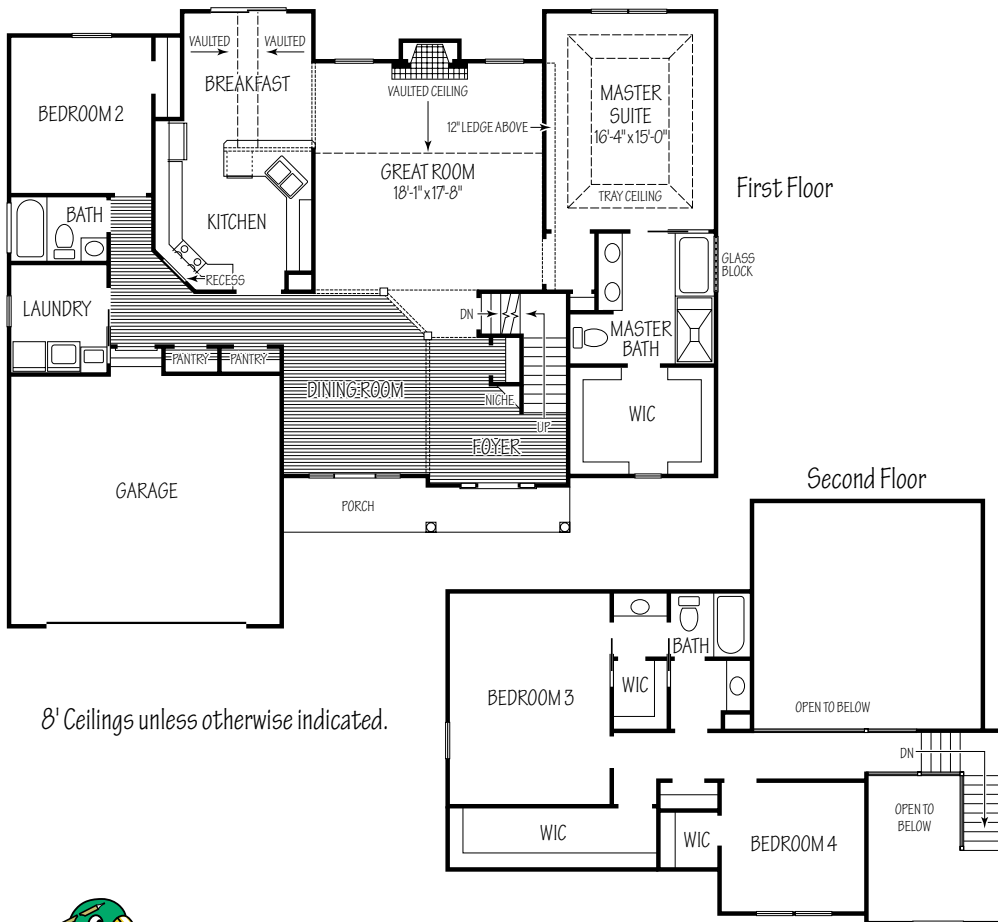


The Bellamy

2529 Fairfield Drive
2,493 Sq. Ft.



Kitchen

- Kitchen
- Undermount sink
- Recessed spice area behind stove
- Tile splashes
- Built in stainless appliances
- Maple cabinets with crown
- Pantry closet

Breakfast

- Volume ceilings
- Transom glass

Master Suite

- Trayed ceiling
- Tiled shower with seat
- Tile backsplashes
- 2 separate undermount sinks
- Walk-in closet
- Glass block window over tub

Great Room

- Vaulted ceiling
- Decorator ledge
- Paddle fan
- Custom mantle
- Transom glass

Dining Room

- Custom pillars
- Laminated wood flooring

Foyer

- 2-story
- Niche
- Laminated wood flooring

Laundry

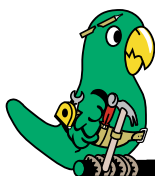
- Sink base with drop in sink

Exterior

- Stone front
- Covered porch

Interior

- Green building practices
- Wood window sills 1st floor
- 2nd floor jack and jill bath
- Walk-in closets
- Recess light package



**R. J. PERRITT
HOMES**
The Green Builder

Homes To Fit Your Lifestyle

www.rjperritthomes.com

Call Bob The Builder 440-897-5872