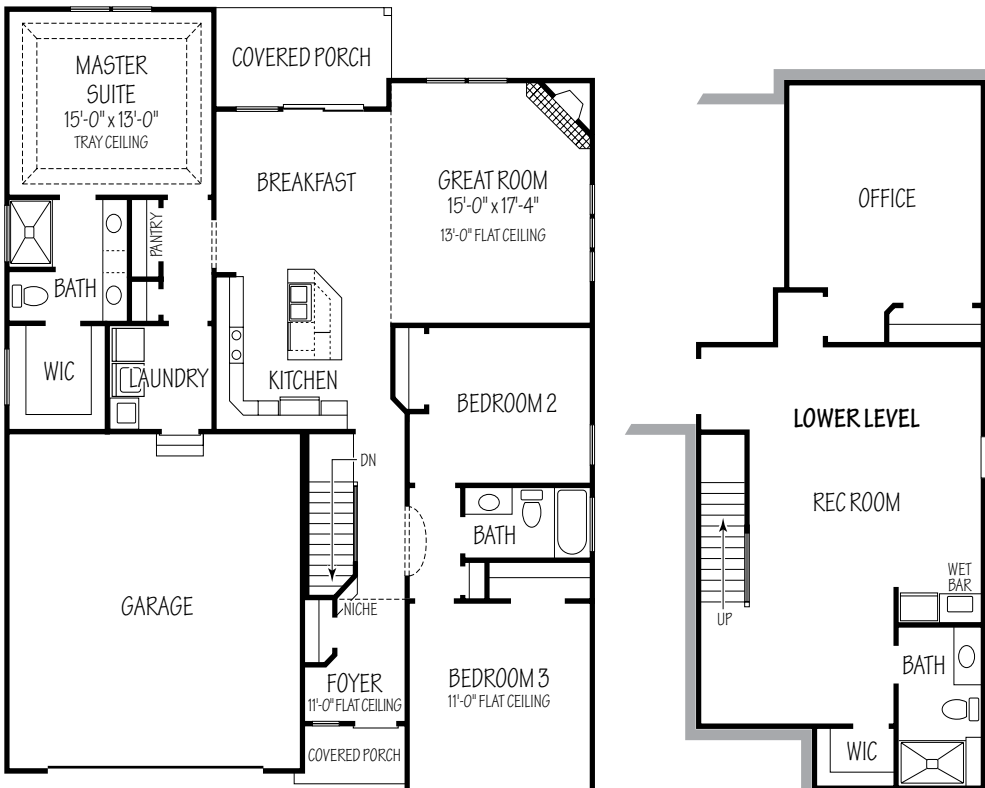


The Tuscany I

339 Copper Creek Drive



9' Ceilings unless otherwise indicated.

Kitchen

- Built in stainless appliances
- Recessed spice area behind range
- Maple panel cabinets with crown
- Upgraded undermount sink & faucet
- Tile backsplashes with glass accents
- Large island with lunchcounter
- Laminated wood flooring
- Custom glass doors to pantry

Master Suite

- Trayed ceiling with crown
- Accent lighting

Master Bath

- 2 separate undermount sinks
- Tile backsplashes
- Transom window
- Walk-in closet with transom glass

Great Room

- 13' vaulted ceiling
- Fireplace with custom surround
- Transom windows
- Coffe wood ceiling
- Paddle fan

Main Bath

- Upgrade sink
- Tile backsplashes

Foyer

- 11' ceilings
- Laminated wood flooring
- Deco wall art
- Decorator ledge with niche
- Open to daylight basement

Laundry

- Sink base with drop in sink
- Wall cabinets with drip rod

Exterior

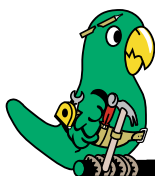
- Stone front
- Covered porches
- Woods view

Interior

- Wood window sills
- Built-in speaker system
- Professionally decorated
- Green building practices

Optional Lower Level

- 8'-0" finished daylight basement
- Wet bar with copper sink
- Full shower bath
- Built in bookshelves
- Carpet made with corn/soy



**R. J. PERRITT
HOMES**
The Green Builder

Homes To Fit Your Lifestyle

www.rjperritthomes.com

Call Bob The Builder 440-897-5872