

The Cambridge III

340 Copper Creek
2,207 Sq. Ft. + 650 Sq. Ft. Finished Basement



Kitchen

- Granite tops
- Built-in stainless steel appliances
- Specialty glass door pantry
- Raised panel cabinets with crown
- Butler Pantry

Master Suite

- Trayed ceiling
- Tiled Shower with seat
- 2 separate undermount sinks

Master Bath

- Built-in shelving
- Walk-in closet with transom glass

Great Room

- Vaulted ceiling
- Decorator ledge
- Bamboo flooring

Main Bath

- Tile tub surround
- Tile flooring
- Stone vessel sink

Loft

- Laminated wood flooring
- Walk-in closet

Laundry

- Sink base with drop-in-sink
- Wall cabinets with drip rod

Foyer

- Volume ceiling
- Niche with recess light
- Custom wall art
- Bamboo flooring

Exterior

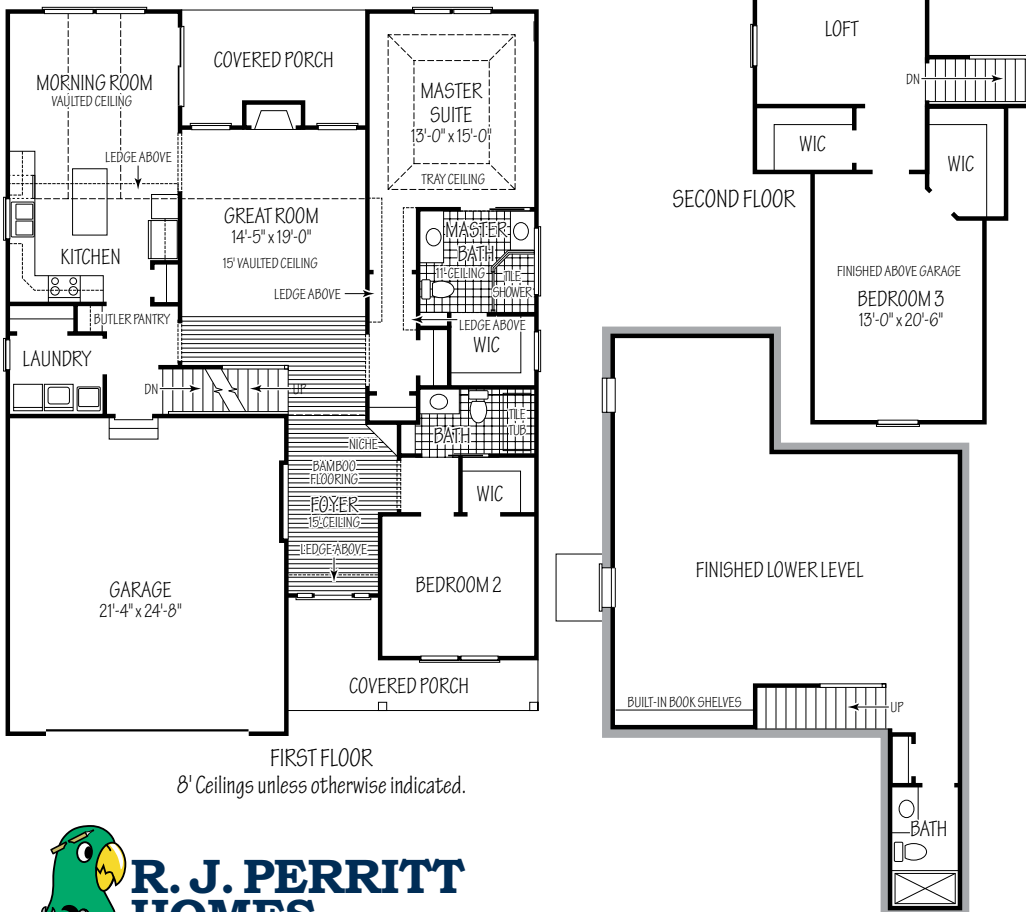
- Stone front
- Fully landscaped
- Covered porches
- Rain garden view

Interior

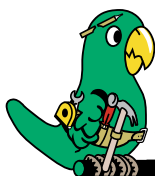
- Whole house speaker system
- Window sills whole house

Lower Level

- 8'-0" finished daylight basement
- Full shower bath
- Built-in bookshelves
- Carpet made with corn/soy



FIRST FLOOR
8' Ceilings unless otherwise indicated.



**R. J. PERRITT
HOMES**
The Green Builder

Homes To Fit Your Lifestyle

www.rjperritthomes.com

Call Bob The Builder 440-897-5872